

A close-up, low-angle shot of the front of a dark-colored Lexus vehicle. The image highlights the intricate details of the multi-lens headlight assembly on the left and the signature spindle grille with its diamond-patterned mesh on the right. The Lexus 'L' emblem is prominently displayed on the grille. The car's sleek, aerodynamic lines are emphasized by the lighting, which creates sharp highlights and deep shadows. The background is a soft, out-of-focus gradient of light blue and grey.

EXCESS WEAR & USE

LEASE-END PROTECTION PLAN
offered by
LEXUS FINANCIAL SERVICES

LEASE SMARTER. TAKE CONTROL.

YOU MAY DO EVERYTHING YOU CAN TO PROTECT YOUR LEASE VEHICLE.

You may go the extra mile to keep your car clean. You abide by your vehicle's recommended maintenance schedule. You may even park strategically to avoid other vehicles.

BUT, IS IT ENOUGH?

No matter how hard you try to protect your lease vehicle, things like dings, dents and scratches are almost inevitable over time.

- The chip in the windshield
- The scrape on a bumper
- The damage to a wheel

These are just a few examples of potential excess wear and use incidents that can happen to anyone's vehicle.



NO CLAIMS TO SUBMIT

NO DEDUCTIBLES TO PAY

NO REIMBURSEMENTS TO REQUEST

Backed by Lexus Financial Services, this plan simplifies your lease-end experience with a seamless and convenient process.

EXPECT THE UNEXPECTED

As a part of everyday driving, normal wear and use can be expected. However, when turning in a lease vehicle, you are responsible for any wear and use damage that is considered excessive under the terms of your lease.

Don't be caught off-guard by unforeseen expenses.

The Excess Wear & Use Protection Plan from Lexus Financial Services helps waive your responsibility for qualifying excess wear and use charges at lease-end, including:

- Each covered single event valued at \$2,000 or less
- Each covered missing part or equipment valued at \$250 or less
- Up to a maximum of \$7,500 in total excess wear and use charges¹

This protection plan is only available when you lease your new or L/Certified Lexus.²

Lease smarter and take control. Ask your participating Lexus dealer for details today.

¹ Plan does not waive excess mileage.

² Plan is only available on leases through your Lexus dealer and Lexus Financial Services. Please see your Excess Wear & Use Lease Addendum for full details on terms, limitations and exclusions.

Under certain circumstances, Lexus Financial Services does not charge its lease customers for excess wear and use damage.



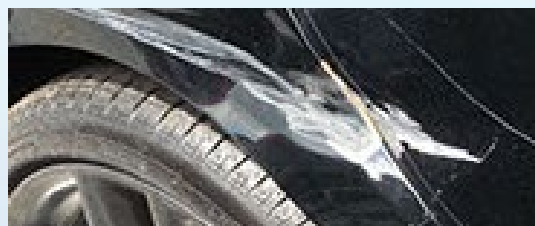
COMMON EXAMPLES OF EXCESS WEAR & USE



Damage to tires,
rims or hubcaps



Interior cuts, burns
or stains



Damaged bumpers, body
dents, dings or scratches




Broken or scratched
windshield, windows,
mirrors or lights



Missing parts or
equipment

Photos are examples only. Covered wear and use items must be within plan limits.



Purchase of an Excess Wear & Use Protection Plan is optional, cancellable (see Lease Addendum) and not required to obtain credit.

The Lexus Financial Services Excess Wear & Use Protection Plan is not available in all states. See your Lexus dealer for more information.

The information in this brochure is provided as an overview of the Excess Wear & Use Protection Plan. Coverage is subject to exclusions and limitations set forth in the Excess Wear & Use Lease Addendum. The information provided in this brochure is subject to change at any time without notice.

Visit us at lexusfinancial.com to learn more about the wide range of finance, lease, vehicle protection, and payment protection programs offered by Lexus Financial Services and your participating Lexus dealer.



©2018 Lexus Financial Services
Lease and Excess Wear & Use Protection are available through participating Lexus dealers and Lexus Financial Services. Lexus Financial Services is a division of Toyota Motor Credit Corporation (TMCC) and a service mark of Toyota Motor Insurance Services, Inc and its subsidiaries. TMCC is the authorized attorney-in-fact and servicer for Toyota Lease Trust.