

# EXCESS WEAR & USE

---

*presented by* LEXUS FINANCIAL SERVICES



**LEASE-END PROTECTION PLAN**

# LEASE SMARTER. TAKE CONTROL.



## YOU TAKE STEPS TO PROTECT YOUR LEASE VEHICLE.

You go the extra mile to keep your car clean. You abide by your vehicle's recommended maintenance schedule. You may even park strategically to avoid other vehicles.

## BUT, IS IT ENOUGH?

No matter how hard you try to protect your lease vehicle, things like dings, dents and scratches are almost inevitable over time.

- The chip in the windshield
- The scrape on a bumper
- The damage to a wheel

These are just a few examples of potential excess wear and use incidents that can happen to anyone's vehicle.

**NO CLAIMS TO SUBMIT.  
NO DEDUCTIBLES TO PAY.  
NO REIMBURSEMENTS TO REQUEST.**

---

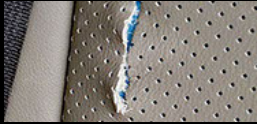
Backed by Lexus Financial Services, this plan simplifies your lease end experience with a seamless and convenient process.

## COMMON TYPES OF EXCESS WEAR & USE

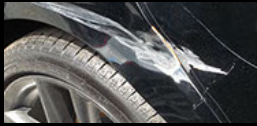
---



Damage to tires, rims or hubcaps



Interior cuts, burns or stains



Damaged bumpers, body dents, dings or scratches



Broken or scratched windshield, windows, mirrors, or lights



Missing parts or equipment

## EXPECT THE UNEXPECTED

As a part of everyday driving, normal wear and use can be expected. However, when turning in a lease vehicle, you are responsible for any wear and use damage that is considered excessive under the terms of your lease.<sup>1</sup>

Don't be caught off guard by unforeseen expenses.

The Excess Wear & Use Protection Plan from Lexus Financial Services helps waive<sup>2</sup> qualifying excess wear and use charges at lease end, including:

- **Each covered single event valued at \$2,000 or less**
- **Each covered missing part or equipment valued at \$250 or less**
- **Up to a maximum of \$7,500 in total excess wear and use charges<sup>2</sup>**

This protection plan is only available when you lease your new or L/Certified Lexus.<sup>3</sup>

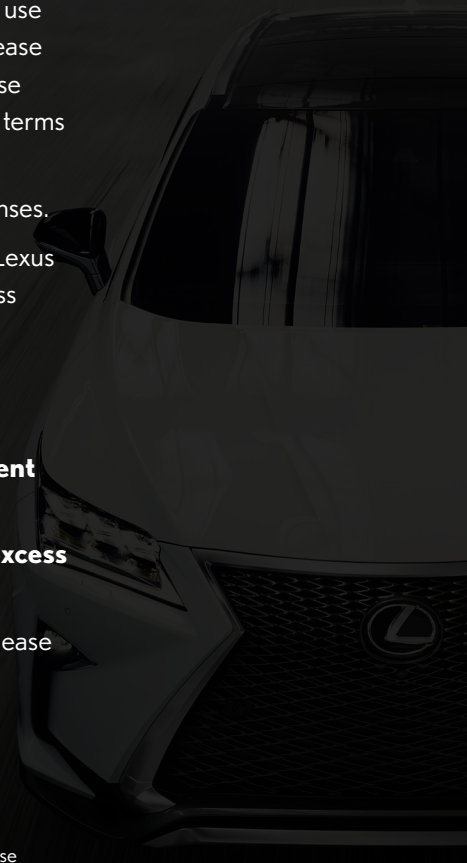
Lease smarter and take control. Ask your participating Lexus dealer for details today.

<sup>1</sup> Under certain circumstances, Lexus Financial Services does not charge its lease customers for excess wear and use damage.

<sup>2</sup> Plan does not cover excess mileage.

<sup>3</sup> Plan is only available on leases through your Lexus dealer and Lexus Financial Services. Please see your Excess Wear & Use Lease Addendum for full details on terms, limitations and exclusions.

Photos are examples only. Covered wear and use items must be within plan limits.





lexusfinancial.com

**THE PURCHASE OF AN EXCESS WEAR & USE VOLUNTARY PROTECTION PRODUCT IS OPTIONAL, CANCELABLE (SUBJECT TO SPECIFIC AGREEMENT TERMS) AND NOT REQUIRED TO OBTAIN CREDIT.**

The Lexus Financial Services Excess Wear & Use Protection Plan is not available in all states. See your Lexus dealer for more information.

The information in this brochure is provided as an overview of the Excess Wear & Use Protection Plan. Coverage is subject to exclusions and limitations set forth in the Excess Wear & Use Lease Addendum. The information provided in this brochure is subject to change at any time without notice.

Visit us at [lexusfinancial.com](http://lexusfinancial.com) to learn more about the wide range of finance, lease, vehicle protection, and payment protection programs offered by Lexus Financial Services and your participating Lexus dealer.

©2021 Lexus Financial Services. Lexus Financial Services is a service mark used by Toyota Motor Credit Corporation (TMCC) and Toyota Motor Insurance Services, Inc. and its subsidiaries. TMCC is the authorized attorney-in-fact and servicer for Toyota Lease Trust.

00352 • 22-437530 (07/21)

# SERVICE

BY LEXUS

---

## UNRIVALED CARE.

## UNPARALLELED EXPERTISE.

