

LEXUS FINANCIAL SERVICES

EXCESSIVE WEAR AND USE GUIDELINES¹

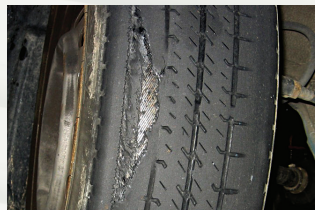
EXTERIOR



SCRATCHED PANEL



SCRATCHED BUMPER



EXPOSED TIRE CORD



GOUGED ALLOY WHEEL



CHIPPED PAINT



DENTED BUMPER



DAMAGED WINDSHIELD



BROKEN LIGHT

PAINT AND BODY

- A consolidation of severe scratches in which the paint has been removed and the underlying panel is exposed
- A single dent greater than the size of a credit card
- Previous repairs performed poorly or unrepaired collision damage

INTERIOR



TEAR



BURN



MISSING ACCESSORY



BROKEN EQUIPMENT

SEAT AND TRIM

- A single cut, tear, burn, or stain greater than the size of a credit card

19-028 (7/18)

¹ This is intended as general guidance only. State law and the terms of your lease may vary your rights and obligations regarding excess wear and use and mileage. Please refer to your lease agreement for a description of your rights and obligations upon termination of your lease. Lexus Financial Services may change its wear and use standards at any time consistent with the terms of your lease agreement.

² Under certain circumstances, Toyota Financial Services does not charge its lease customers for excess wear and use damage.

TIRES, WHEELS, AND WHEEL COVERS

- Tires with exposed cords or sidewall damage
- Tires or wheels that do not meet manufacturer's guidelines for safe operation
- Missing or damaged wheel covers
- Wheel gouges greater than 1"

GLASS AND LIGHTS

- Windshield cracks, stars, or bull's-eyes
- Damaged, broken, or non-factory-tinted glass
- Bent, broken, or missing lights, turn signals, mirrors, or lamps

EQUIPMENT, PARTS, AND ACCESSORIES

- Missing keys/remotes
- Missing parts or accessories (shifter knobs, head rests, tonneau/cargo cover, etc.)
- Inoperative, malfunctioning, or broken parts or equipment
- Any modifications not on the vehicle at lease inception

LEASE-RETURN CHECKLIST AND MEASURING TOOLS

Use this checklist to help ensure your lease turn-in process is fast and simple.

- Use the measuring tools to examine any possible wear and use on your vehicle.²
- Schedule your vehicle inspection appointment prior to lease-end date.
- Schedule a turn-in appointment with your Lexus dealer.
- Bring the following materials with you to your pre-inspection and lease-return appointments:
 - All sets of keys (masters, remotes, and valet), if applicable
 - Owner's Manuals
 - Tool kit and spare tire, if applicable
 - Any original equipment on your vehicle at lease inception (radio, headrests, 3rd row seat, tonneau/cargo cover, etc.)
- Bring the Odometer Statement included in your final billing statement (also available on LFSLeaseEnd.com), and have the dealer record the mileage. Don't forget to sign the statement and ask for a copy.
- Check with your DMV to determine if your state requires license plate return at lease end.
- Cancel any electronic payments.

Use a credit card as a guide to check for excess wear and use damage.

← A credit card is 3 3/8" in length →

QUESTIONS?
CONTACT 800-286-0653

